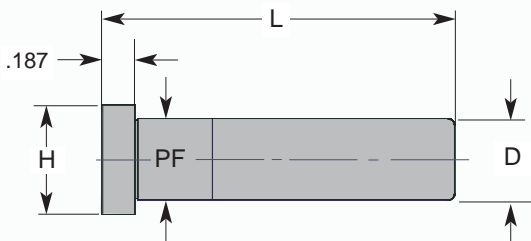


Leader Pins

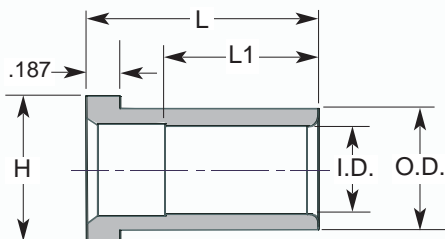


GENERAL DIMENSIONS			
NOMINAL DIAMETER	D	PF	H
1/2	.4990	.5005	.750
5/8	.6240	.6255	.875

CATALOG NUMBER	D	L
FL-50-20	1/2	2.000
FL-50-22		2.250
FL-50-23		2.375
FL-50-24		2.500
FL-50-26		2.750
FL-50-27		2.870
FL-50-30		3.000
FL-50-32		3.250
FL-50-33		3.375

CATALOG NUMBER	D	L
FL-62-14	5/8	1.500
FL-62-20		2.000
FL-62-22		2.250
FL-62-24		2.500
FL-62-26		2.750
FL-62-30		3.000
FL-62-32		3.250
FL-62-34		3.500
FL-62-40		4.000

Shoulder Bushings

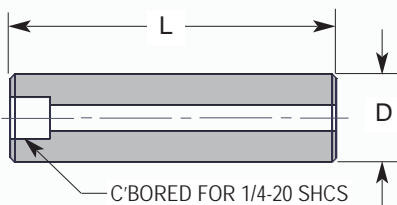


GENERAL DIMENSIONS				
NOMINAL DIAMETER	I.D.	O.D.	H	L1
1/2	.5005	.7505	.875	1.00
5/8	.6255	.8755	1.125	1.25

CATALOG NUMBER	D	L
FB-50-07	1/2	.77
FB-50-10		.90
FB-50-11		1.02
FB-50-12		1.15
FB-50-13		1.27
FB-50-15		1.52
FB-50-17		1.77
FB-50-21		2.02

CATALOG NUMBER	D	L
FB-62-07	5/8	.77
FB-62-10		.90
FB-62-11		1.02
FB-62-12		1.15
FB-62-13		1.27
FB-62-15		1.52
FB-62-17		1.77
FB-62-21		2.02

Support Pillars



CATALOG NUMBER	D	L
FZ-07-26	3/4	2.625
FZ-07-35	3/4	3.500
FZ-10-26	1	2.625
FZ-10-35	1	3.500
FZ-12-26	1-1/4	2.625
FZ-12-35	1-1/4	3.500